



Uncompensated Pressure Sensors



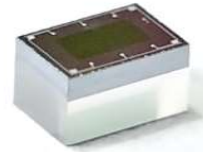
PRODUCT DESCRIPTION:

SCL's MEMS based pressure sensors are in the form of Bridge of four piezo-resistors to give differential output proportional to applied pressure. The absolute sensors have an internal vacuum reference.

These are intended for use with Non-corrosive, Non-ionic working fluids; such as air and dry gases.

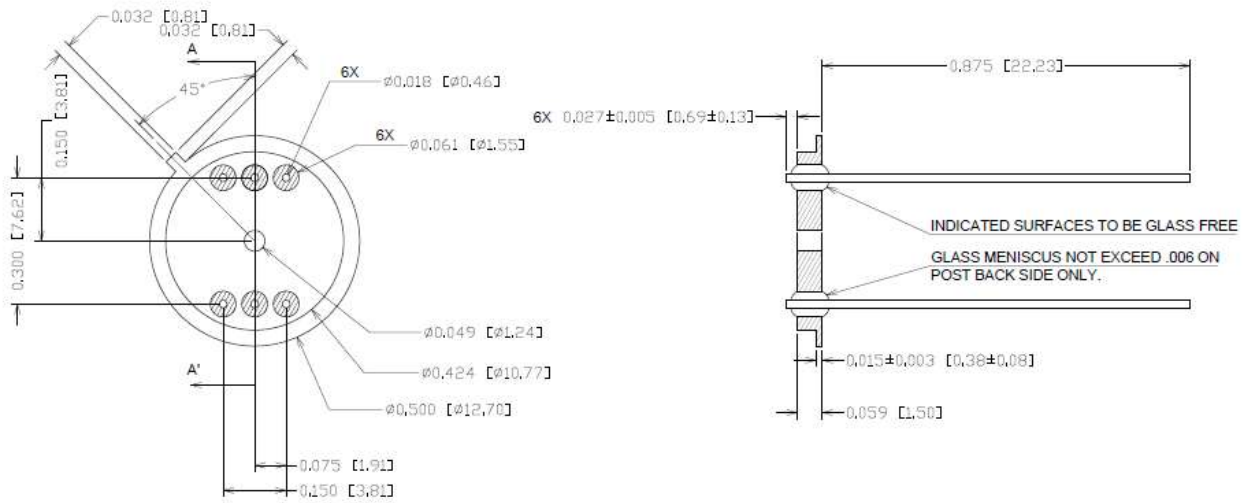
FEATURES:

- Operating Ranges : Upto 30 bar
- Package : TO headers, PCB (COB)
- Custom Package option available
- Sensor dies are available

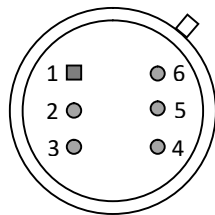


Product Specifications		
S.No.	Parameters	Specification
1	Operating Pressure Range	Upto 5 bar
2	Pressure Reference	Absolute
3	Proof Pressure	> 1.5 Times Operating Pressure
4	Burst Pressure	>3 Times Operating Pressure
5	Operating Temperature	-40°C to 125°C
6	Storage Temperature	-40°C to 125°C
7	Bridge Resistance (at 25°C)	3.0 KΩ ± 1 KΩ
8	Non-Linearity	<0.2 % FSR
9	Hysteresis	<0.1%FSR
10	Repeatability	<0.1%FSR
11	Bridge Voltage	3V (Typ.), 1V – 5V
12	Full Scale Range (FSR)	75 ± 25 mV (at 3Vexc)
13	Offset	±10 mV/V
14	TC of Bridge Resistance (TCR)	1000±250 (ppm/°C)
		2000±250 (ppm/°C)
15	TC of Span (TCS) Voltage Excitation	-2000±500 (ppm/°C)
16	TC of Offset (TCO)	±25 uV/V/°C
17	Response Time	< 5ms

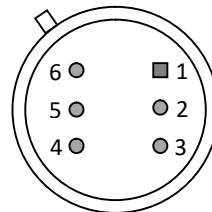
HEADER



NOTE : All Units in inches [mm]



Top View



Pin View

Pin	Signal Name	Description
1	EXC+	Bridge Excitation Positive
2		(Connected with VREFOUT = 1.22V of SC1218)
3	SIG-	Differential Signal Negative Output
4	SIG+	Differential Signal Positive Output
5	EXC-	Bridge Excitation Negative
6		(Connected with Ground)