

HEX SCHMITT-TRIGGER

INVERTER (5V)

SC1126-0

(Radiation Hardened)



DATA SHEET

(Version 1.1, February 2021)



**Semi-Conductor Laboratory
Government of India
S.A.S. Nagar, Punjab-160071
www.scl.gov.in**



PRODUCT DESCRIPTION:

SC1126-0 is a Radiation Hardened Hex Inverter with Schmitt trigger action on all inputs. Schmitt trigger is a comparator which triggers at different points for positive and negative going signals and the difference between positive voltage (V_{TP}) and negative voltage (V_{TN}) is the Hysteresis voltage (V_H).

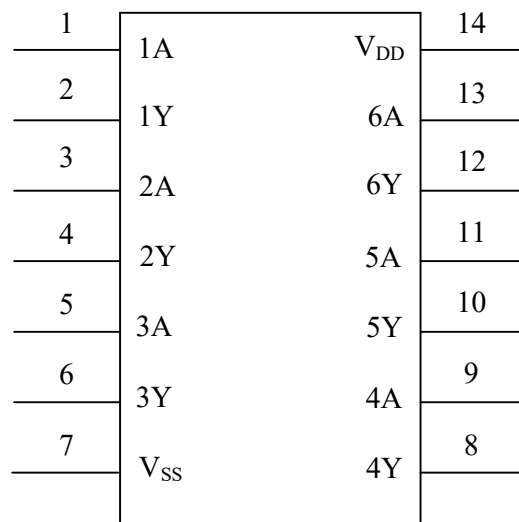
APPLICATIONS:

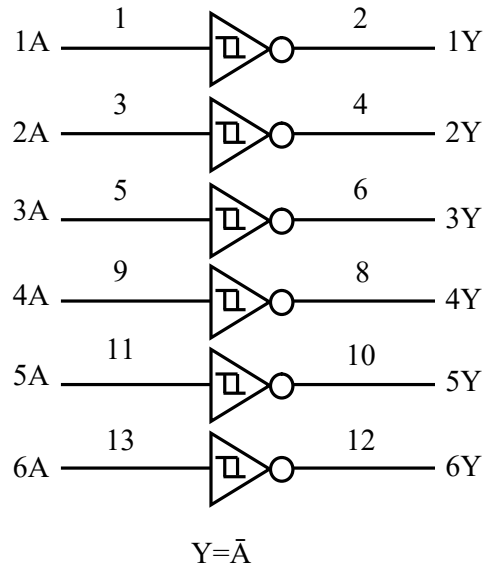
- NOT logic
- High-noise-environment systems
- Military
- Space

FEATURES:

- **Operating Supply Voltage 3.3V - 5.5V**
- **Cold Sparing feature at inputs**
- **Schmitt-trigger on each input with no external components.**
- **Noise immunity greater than 50%**
- **No limit on input rise and fall time**
- **Hysteresis voltage $V_H = 1.1V$ ($V_{DD} = 5.0V$)
 $T_A = 25^\circ C$ (Typical)**
- **Radiation Hardened up to 200 KRad TID**
- **Operating Temperature: $-55^\circ C$ to $125^\circ C$**
- **SET/SEL immune up to 50 MeV-cm²/mg**
- **14-pin CSOP / Customized package / Die**
- **Package $\theta_{JC} = 7.47^\circ C/Watt$**
- **Pin compatible with SN5414**
- **ESD Sensitivity Level:
Class 0 (< 250V) HBM**
- **SCL's 180nm CMOS Technology**

DEVICE PIN-OUT & LOGIC DIAGRAM:





PIN DESCRIPTION:

SYMBOL	PIN	DESCRIPTION
1A to 6A	1, 3, 5, 9, 11, 13	Input
1Y to 6Y	2, 4, 6, 8, 10, 12	Output
V_{DD}	14	Positive Supply Voltage
V_{SS}	7	Ground (0V)

FUNCTIONAL TRUTH TABLE:

INPUT	OUTPUT
nA	nY
0	H
1	L



ABSOLUTE MAXIMUM RATINGS (1):

Symbol	Parameter	Value	Unit
V_{DD}	DC Supply Voltage	-0.5 to 6.5	V
V_{IO}	Voltage at any Pin	-0.5 to 6.5	V
T_J	Max. Junction Temperature	150	°C
T_{STG}	Storage Temperature	-65 to 150	°C

(1) Stresses beyond those listed under *absolute maximum ratings* may cause permanent damage to the device. These are stress ratings only, and functional operation of the device at these or any other conditions beyond those indicated under *recommended operating conditions* is not implied. Exposure to absolute-maximum-rated conditions for extended periods may affect device reliability.

RECOMMENDED OPERATING CONDITIONS:

Symbol	Parameter	Value	Unit
V_{DD}	Supply Voltage	3.3 to 5.5	V
V_{IN}	Input Voltage	0 to V_{DD}	
I_{OH}	High Level Output Current (Source)	-5.2	mA
I_{OL}	Low Level Output Current (Sink)	5.2	
T_A	Free Air Operating Temperature	-55 to 125	°C



DC ELECTRICAL CHARACTERISTICS

Test condition: $V_{DD}=3.3V$ to $5.5V$, $V_{SS}=0V$, $T_A = -55^{\circ}C$ to $+125^{\circ}C$ (unless otherwise specified)

Symbol	Parameter	Test Condition	Test Limits			
			Min.	Typ.	Max.	Unit
I_{DD}	Quiescent Supply Current	$V_{DD}=5.5V$, $V_{IL} = 0V$ or $V_{IH} = 5.5V$ All Outputs Open	-	0.05	2.0	μA
I_{IL}	Low Level Input Current	$V_{DD}=5.5V$, $V_{IN} = 0V$, $V_{SS}=0V$	-	0.02	-1	μA
I_{IH}	High Level Input Current	$V_{DD}=5.5V$, $V_{IN} = 5.5V$, $V_{SS}=0V$	-	0.02	1	μA
V_{OL1}	Low Level Output Voltage 1	$V_{DD}=3.3V$, $V_{SS}=0V$ $V_{IH}=2.31V$, $I_{OL}=20\mu A$	-	20	100	mV
V_{OL2}	Low Level Output Voltage 2	$V_{DD}=4.5V$, $V_{SS}=0V$ $V_{IH}=3.15V$, $I_{OL}=20\mu A$	-	20	100	mV
V_{OL3}	Low Level Output Voltage 3	$V_{DD}=5.5V$, $V_{SS}=0V$ $V_{IH}=3.85V$, $I_{OL}=20\mu A$	-	20	100	mV
V_{OL4}	Low Level Output Voltage 4	$V_{DD}=3.3V$, $V_{SS}=0V$ $V_{IH}=2.31V$, $I_{OL}=4mA$	-	100	400	mV
V_{OL5}	Low Level Output Voltage 5	$V_{DD}=4.5V$, $V_{SS}=0V$ $V_{IH}=3.15V$, $I_{OL}=4mA$	-	90	400	mV
V_{OL6}	Low Level Output Voltage 6	$V_{DD}=5.5V$, $V_{SS}=0V$ $V_{IH}=3.85V$, $I_{OL}=5.2mA$	-	110	400	mV
V_{OH1}	High Level Output Voltage 1	$V_{DD}=3.3V$, $V_{SS}=0V$ $V_{IL}=0.165V$, $I_{OH}=-20\mu A$	3.2	3.29	-	V
V_{OH2}	High Level Output Voltage 2	$V_{DD}=4.5V$, $V_{SS}=0V$ $V_{IL}=0.5V$, $I_{OH}=-20\mu A$	4.4	4.49	-	V
V_{OH3}	High Level Output Voltage 3	$V_{DD}=5.5V$, $V_{SS}=0V$ $V_{IL}=0.9V$, $I_{OH}=-20\mu A$	5.4	5.49	-	V
V_{OH4}	High Level Output Voltage 4	$V_{DD}=3.3V$, $V_{SS}=0V$ $V_{IL}=0.165V$, $I_{OH}= -4mA$	2.5	2.99	-	V
V_{OH5}	High Level Output Voltage 5	$V_{DD}=4.5V$, $V_{SS}=0V$ $V_{IL}=0.5V$, $I_{OH}= -4mA$	3.7	4.25	-	V
V_{OH6}	High Level Output Voltage 6	$V_{DD}=5.5V$, $V_{SS}=0V$ $V_{IL}=0.9V$, $I_{OH}= -5.2mA$	4.7	5.21	-	V

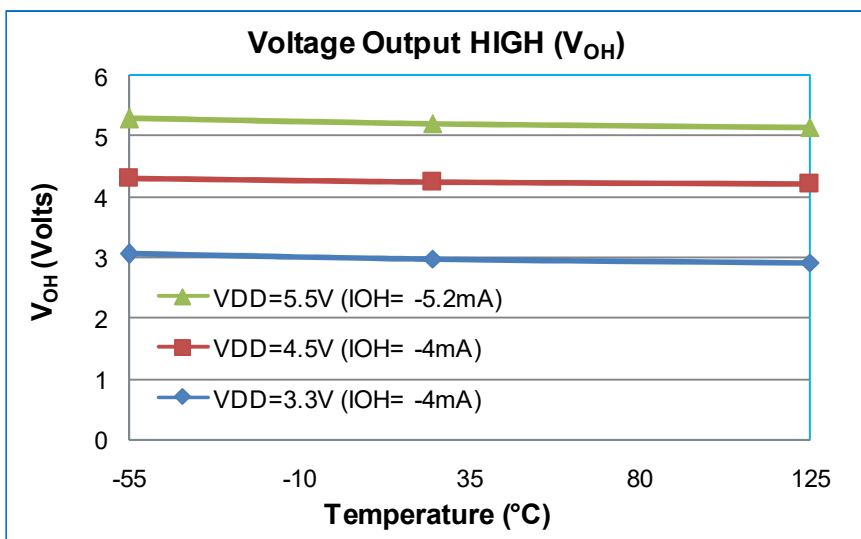
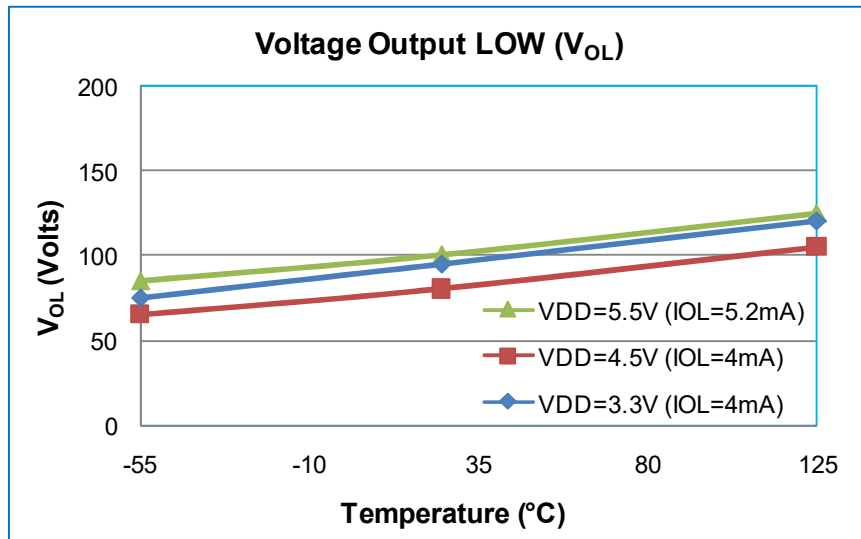
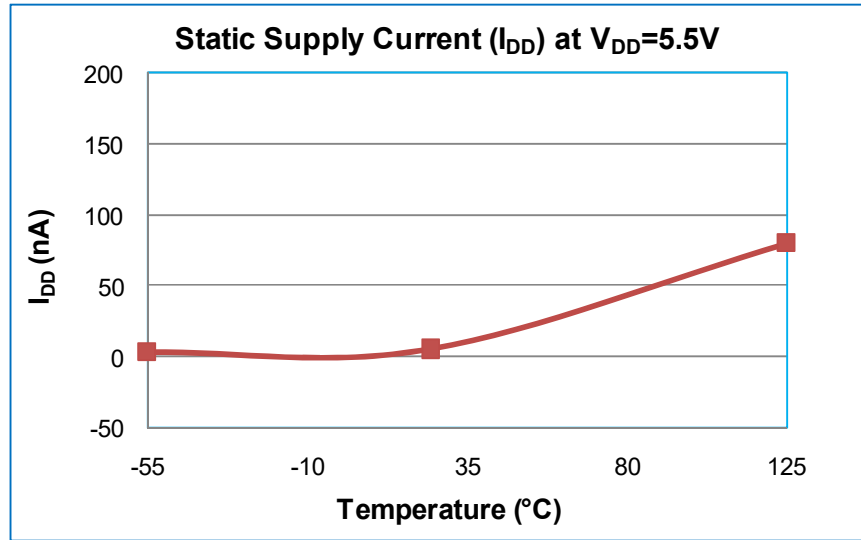


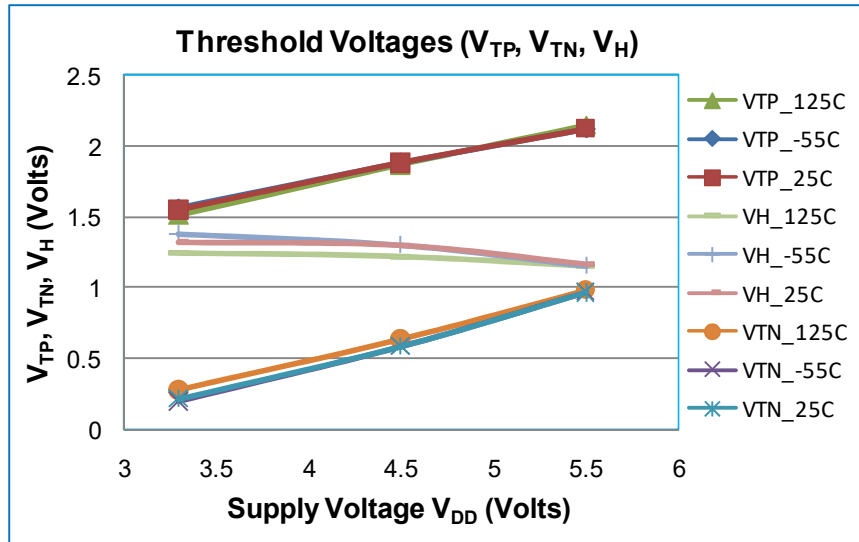
DC ELECTRICAL CHARACTERISTICS (Continued..)

Symbol	Parameter	Test Condition	Test Limits				
			Min.	Typ.	Max.	Unit	
Functional (Truth Table Verification without Load) @ 1Mhz	Functional Test 1	$V_{DD}=5.5V, V_{SS}=0V$ $V_{IL}=0.9V, V_{IH}=3.85V$	-	-	-	-	
	Functional Test 2	$V_{DD}=4.5V, V_{SS}=0V$ $V_{IL}=0.5V, V_{IH}=3.15V$	-	-	-	-	
	Functional Test 3	$V_{DD}=3.3V, V_{SS}=0V$ $V_{IL}=0.165V, V_{IH}=2.31V$	-	-	-	-	
	Functional Test 4 (Level Translation Test)	$V_{DD}=3.0V$ $V_{IL}=0V, V_{IH}=5.5V$ $V_{OL} \leq 0.5V, V_{OH} \geq 2.5V$	-	-	-	-	
I_{OFF}	Power Off Input Leakage Current (Cold Spare)	$V_{DD} = 0V$	$V_{IN} = 0V$	-	.006	± 1	μA
			$V_{IN} = 5.5V$	-	0.4	± 5	μA
V_{TP1} V_{TP3} V_{TP3}	Positive Trigger Threshold Voltage	$V_{IN}=0V$ to V_{TP} , $V_{DD}=3.6V$ $V_{DD}=4.5V$ $V_{DD}=5.5V$	1.15 1.55 1.90	1.54 1.87 2.13	2.31 3.15 3.85	V	
V_{TN1} V_{TN2} V_{TN3}	Negative Trigger Threshold Voltage	$V_{IN}=V_{DD}$ to V_{TN} , $V_{SS}=0V$ $V_{DD}=3.6V$ $V_{DD}=4.5V$ $V_{DD}=5.5V$	0.16 0.5 0.9	0.20 0.58 0.96	1.8 2.4 3.0	V	
V_{H1} V_{H2} V_{H3}	Hysteresis Voltage $V_H = (V_{TP}-V_{TN})$	$V_H=V_{TP}-V_{TN}$, $V_{SS}=0V$ $V_{DD}=3.6V$ $V_{DD}=4.5V$ $V_{DD}=5.5V$	0.3 0.4 0.5	1.35 1.3 1.17	1.5 2.1 2.5	V	
V_{IC}	Input Clamp Voltage to V_{SS}	$I_{IN} = -100\mu A$ $V_{SS}=0V$	-0.1	-0.6	-1.0	V	
t_{PLH}	Propagation Delay Low to High	$V_{DD}=4.5V$ $V_{IL} = 0V, V_{IH}=4.5V$ 1 MHz Pulse, $C_L=30$ pF	-	12	27	ns	
t_{PHL}	Propagation Delay High to Low	$V_{DD}=4.5V$ $V_{IL} = 0V, V_{IH}=4.5V$ 1 MHz Pulse, $C_L=30$ pF	-	17	27	ns	



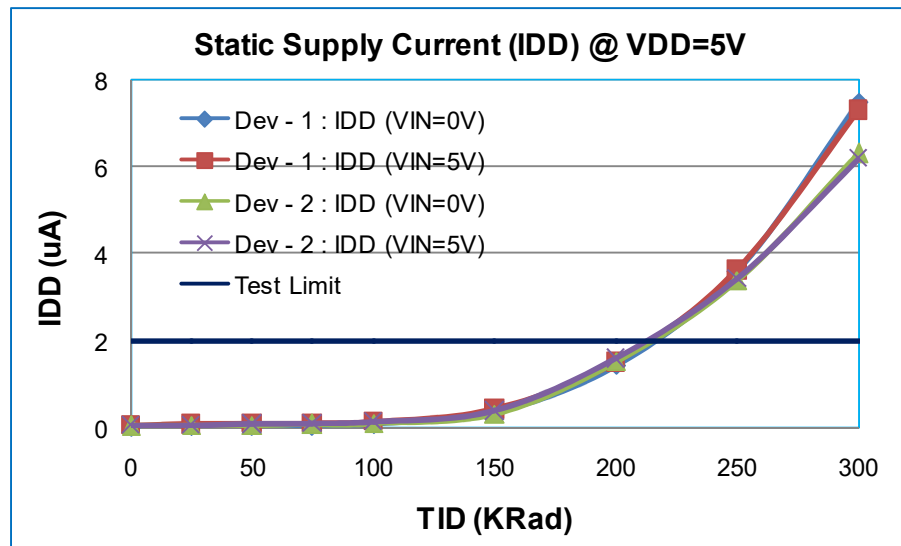
TYPICAL ELECTRICAL CHARACTERISTICS:





RADIATION CHARACTERISTICS:

Total Ionization Dose (TID)



TID Test Conclusion:

- No significant change in supply current observed upto 100 Krad. I_{DD} remains within specifications (2 μA) upto 200 Krad.
- There is no substantial change in device parameters (leakages, output levels, hysteresis voltage) up to 300KRad.
- The device is fully functional up to 300 Krad.



Single Event Effect (SEE)

Single Event Effects	LET in Silicon (MeV-cm ² /mg)	
	22.9 (Ti)	50.7 (Ag)
Transient (SET)	PASS	PASS
Latch-Up (SEL)	PASS	PASS

SEE Test Conclusion:

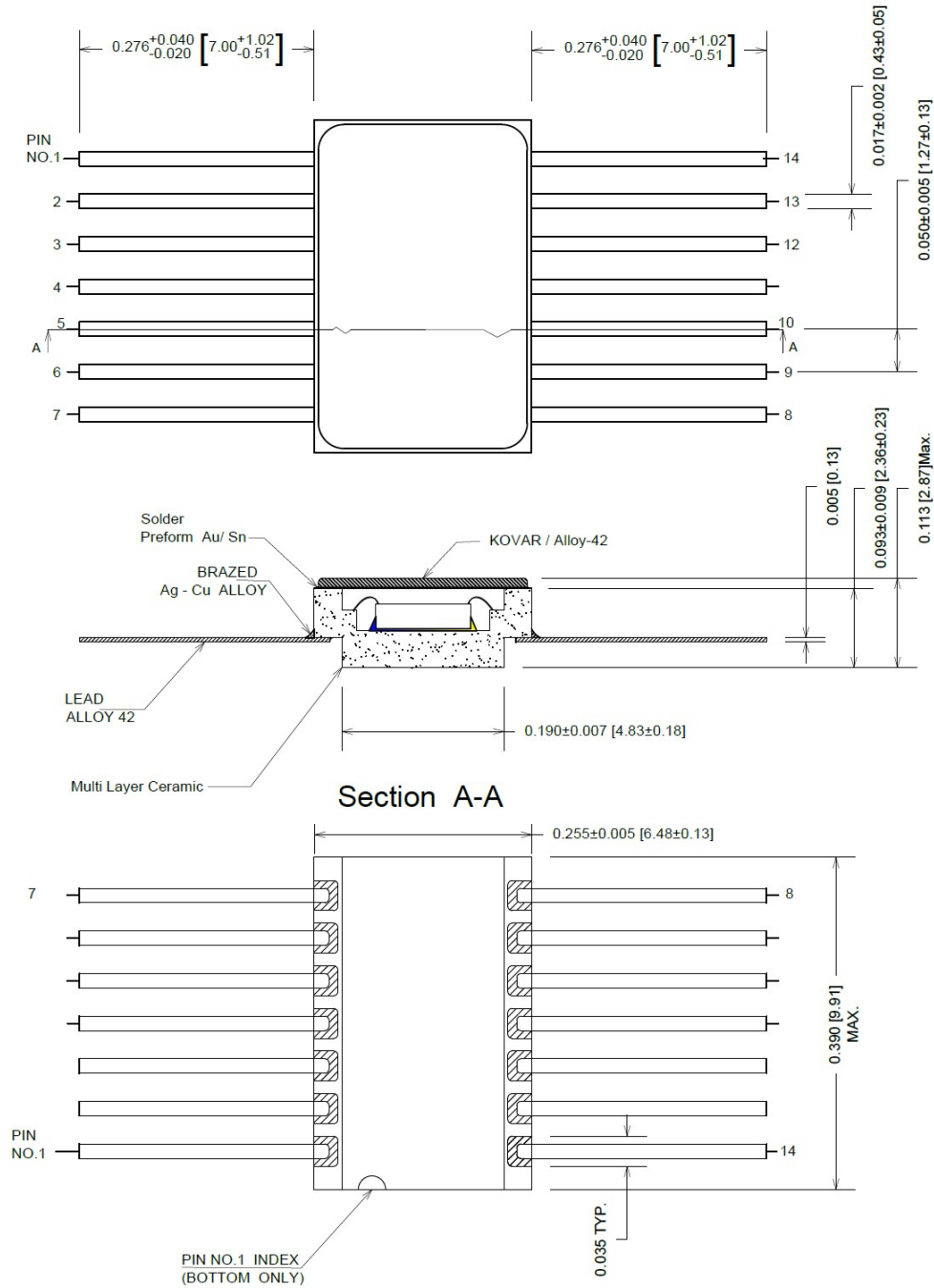
- SEE testing of Hex Schmitt Trigger Inverter (SC1126-0) is done at two different LET 22.9 & 50.7 MeV-cm²/mg for a fluence of 10⁶ ions/cm².
- No transient and Latch-up observed during irradiation.
- The Device is passed in SET, SEL up to LET of 50 MeV-cm²/mg.

Revision History			
S. No.	Version	Date of release	Description
1	1.0	Mar. 2020	--
2	1.1	Feb. 2021	Cold sparing test results added (Ioff)



MECHANICAL DRAWING OF PACKAGE 14-Pin Ceramic-Dual-Flat Pack

NOTE: All linear dimensions are in inches (mm.)



IMPORTANT NOTICE

Semi Conductor Laboratory (SCL) reserves the right to make corrections, enhancements, improvements and other changes to its semiconductor products and specifications, and to discontinue any product. Buyers should obtain the latest relevant information before placing orders and should verify that such information is current and complete. Reproduction of significant portions of SCL information in SCL data sheets is permissible only if reproduction is without alteration and is accompanied by all associated conditions, limitations, and notices. SCL is not responsible or liable for such altered documentation.