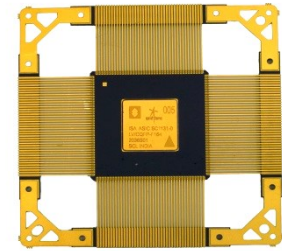


# INERTIAL SENSOR ACQUISITION ASIC (ISA)



SCL Part No.

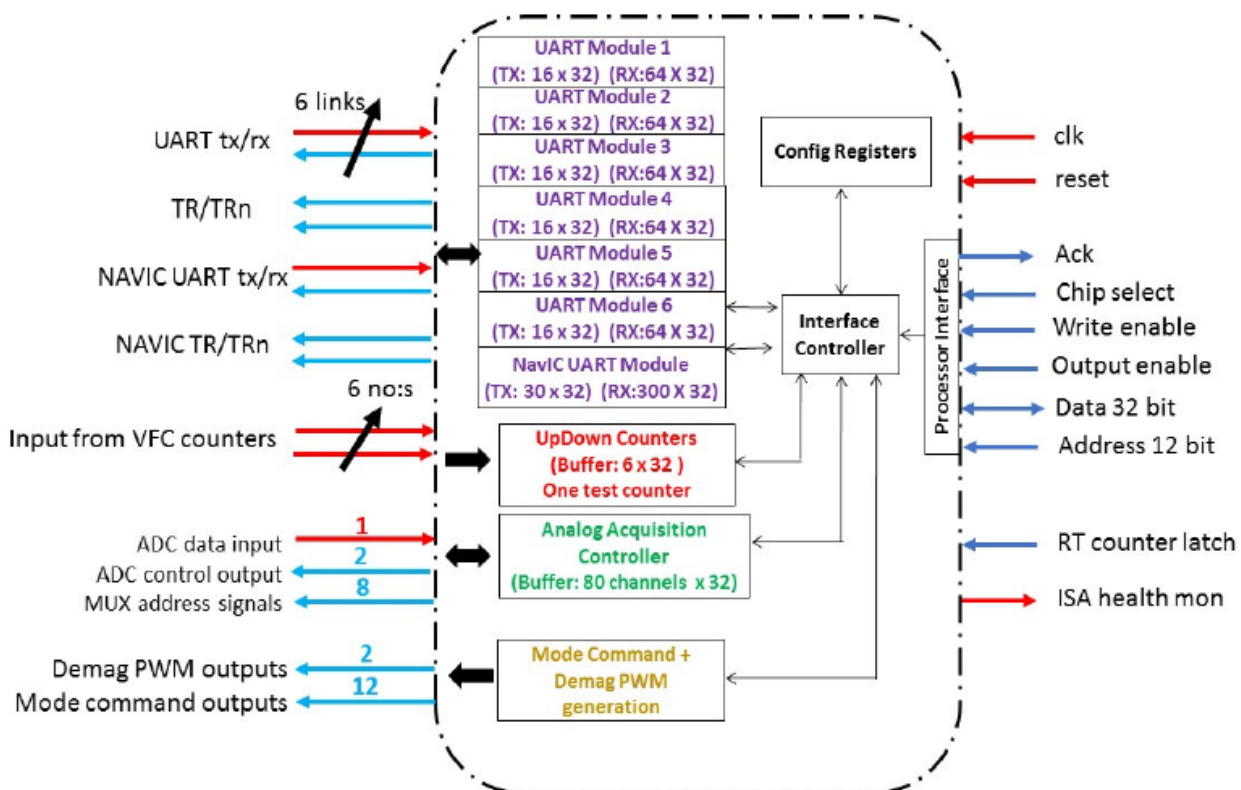
SC1131-0

## PRODUCT DESCRIPTION:

ISA ASIC is an interface controller between ISU system and processor. ISA ASIC is used to acquire functional and health monitoring parameters from the sensors and store the data in receive buffers for the processor to read. ISA is to be designed as a memory peripheral to the main processor. The external interfaces are to be controlled by writing into specific configuration registers in ISA. ISA supports ISU interfaces such as UART links, analog data acquisition, NAVIC UART link interface, counters for VFC output and mode command/demag PWM for system powering sequence.

## FEATURES:

- 3.3 V I/O pads Power Supply
- 1.8 V Core Supply
- Operation Frequency 50 MHz
- Quiescent Supply Current < 1mA
- Output loading  $\pm 4$  mA
- Operating Temperature  $-55^{\circ}\text{C}$  to  $125^{\circ}\text{C}$
- Testability Features: Scan and Functional
- Packaged in 164 Pins, CQFP
- SCL's 180nm CMOS Technology



Block Diagram of ISA ASIC